



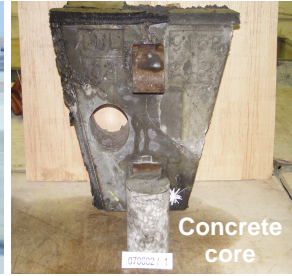
Slump Testing



Building Survey



Schmidt Survey



Concrete core

TESTING & ANALYSIS OF CONCRETE & CONSTRUCTION MATERIALS

Holliday Concrete Testing Limited was established in 1964 and is now a wholly owned subsidiary of 4-RAIL Services Limited, offering services to a wide range of clients including principal contractors, sub-contractors, developers, engineers, property managers and local authorities, we are best known for our regular concrete & mortar cube collect & UKAS accredited test service (UKAS No. 0478). This service has been in operation on construction sites without interruption since the Company was founded. In addition, we also offer a wide range of tests associated with concrete & mortar, destructive and non-destructive, some of which are detailed below.

- **Compressive strength of concrete cubes (BS EN 12390).** The cube test is the most widely used method of assessing the quality of hardened concrete.
- **Compression test on concrete cores (BS 1881 : Part 120 or BS EN 12504-1).** This methodology is used to assess actual in-situ strength of concrete in cases of non-compliance or in old structures.
- **Compressive strength of bricks (BS 3921).** Testing can be carried out on both old and new bricks to ascertain the compressive strength.
- **Aggregate/cement ratio (cement content).** Determining the cement content assists engineers in assessing the durability of concrete when compressive strength test results are low.
- **Mix proportions of mortar.** This methodology is used to assess compliance of hardened mortar .
- **On-site Services — Cube-making; concrete & mortar (BS EN 12350 & BS 4551).** Monitoring of the quality of concrete and mortar during construction, utilising widely accepted methodology.
- **Presence of High Alumina Cement (HAC).** A test vital for the process of providing guidance and additional testing for structures containing HAC concrete .
- **Building surveys (intrusive and non-intrusive).** Surveys are undertaken in older structures to assess potential defects to enable the client to plan possible repairs and assess the future working life of a structure.
- **Depth of carbonation.** A technique used to assess the alkalinity of the concrete environment surrounding reinforcing steel.
- **Covermeter survey (BS 1881 : Part 204).** Used to locate steel reinforcement in hardened concrete. Typically used in older structures.
- **Rebound (Schmidt) Hammer survey (BS EN 12504).** A popular technique to assess the surface hardness of an existing structure, giving an estimated in-situ cube strength.
- **Screed Testing (BRE Screed Test).** This methodology assess the soundness of newly laid screeds.

To discuss your particular requirements regarding these or other complementary services, contact us by emailing info@hollidayconcretetesting.co.uk or call us on **020 8955 1707**

Holliday Concrete Testing Limited is one of the longest established Independent Concrete & Materials Testing laboratories

Unit 11 Ironbridge Close, Great Central Way, London NW10 0UF
Telephone: 020 8955 1707 Facsimile: 020 8955 1709
www.hollidayconcretetesting.co.uk

